



# bioplic

## Light curing temporary filling

### Dentistry

- temporary restoration
- making occlusal matrix

### Endodontics

- sealing of cavities between the sessions

### Implantology

- temporary and/or definitive sealing of screws over implants

### Orthodontics

- protection of brackets and wires (avoids hurting the patient)

### Dental prosthesis

- sealing of prosthetic preparations

“The most effective use for the containment of coronal leakage”.

Guinesi, A. S. , Pinheiro, C. R.; Bonetti Filho, I. Sealer Capacity Assessment of Temporary Cements. DENTAL SCIENCE Clinic and Integrated Research. 2008.; 2 (7): 169-175.

**biodinâmica**<sup>®</sup>  
respect for you

Bioplic is a transparent light curing temporary filling material. After being light cured Bioplic maintains its consistense slightly rubberlike, allowing its removal with curettes or probe, without need the use of drills.

The product promotes working time reduction and provides greater comfort to the patient.



\*2 syringes with 2g of BIOPLIC

### Sealing for a definitive restoration



BIOPLIC as a temporary restoration. After 2 months;



Insertion of a thin layer of Bioplic, after removing the temporary restoration;



Occlusal view of the sealing with Bioplic protecting the "head" of the intermediary screw;



Occlusal view of the definitive restoration.

\*Prof. Manoel Martin Junior - Master and Doctorate in Dental Prosthesis (UNESP Araçatuba), Coordinator and Especialization teacher in Dental prosthesis (Integrale-Londrina e ABCD-PR).

### Sealing for temporary restorations



Bioplic insertion at the hole of the screw of the element 46;



Light cure for 40 seconds;



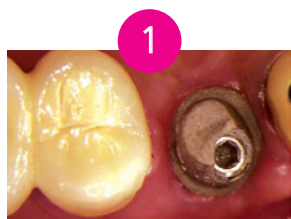
Checking occlusion after light curing. adjustment with polishing drills;



Final view after checking the occlusion.

\* Prof. Manoel Martin Junior - Mestre e Doutorando em Prótese Dentária (UNESP Araçatuba), Coordenador e Professor de Especialização em Prótese Dentária (Integrale-Londrina e ABCD-PR)

### Application of Bioplic at implants



Occlusal view of implant prosthetic component (observe the screw);



Apply the Bioplic to protect the screw;



Light cure for 20 seconds;



After light curing, the final prosthetic piece can be cemented;



Prosthetic piece cemented, final occlusal view.